



DPW

DONEY PARK WATER

“A Member-Owned Cooperative”

A brief history of Doney Park Water

Originally called The Black Bill and Doney Park Water Users Association.

Doney Park Water was incorporated in 1936.

From 1960-1970's the water system grew to include several subdivisions.

The water system was significantly expanded and improved in the 1980's.

From 1990 to 2008 the water system grew faster than most Arizona cities.



Some System Statistics

Service area spans over 44 square miles.

More than 136 miles of water lines serving over 3550 services.

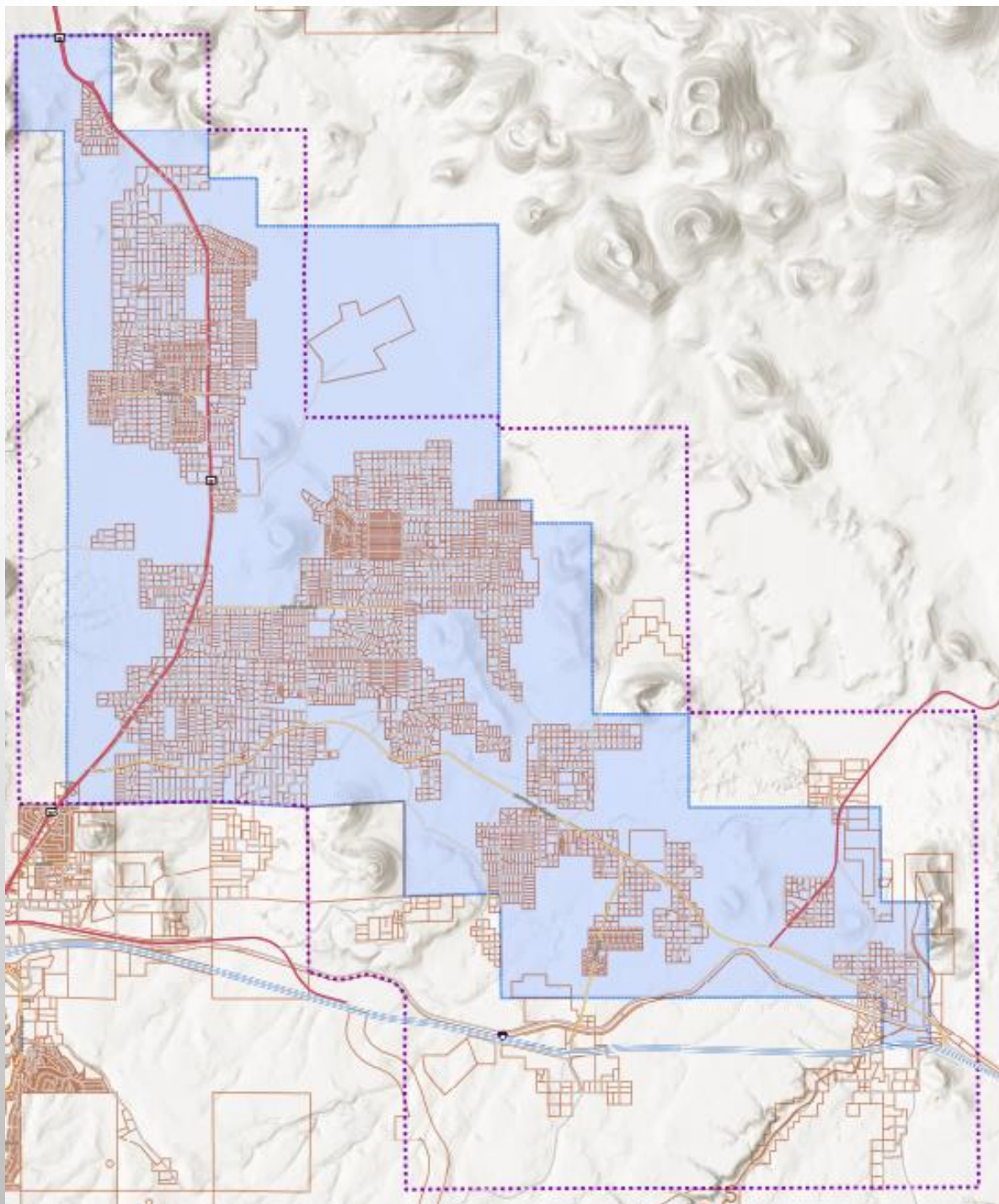
7 Wells in production and 1 undeveloped well.

10 Storage facilities with a combined capacity of 4.9 million gallons.

19 Booster stations and 40 booster pumps.

16 individual pressure zones in elevations from 7200-6200 feet





Future growth

Availability of land within the service area for development is low.

Future growth from subdivisions and land splits estimated at 300 services.

In some areas, mainline infrastructure will not support growth.

Recent capitol improvement has focused on wells, boosters, and metering.



Future Concerns

No secondary supply.

Groundwater contamination – Rio De Flag 6MGD.

Increased residential density and current infrastructure.

Well equipment availability.

