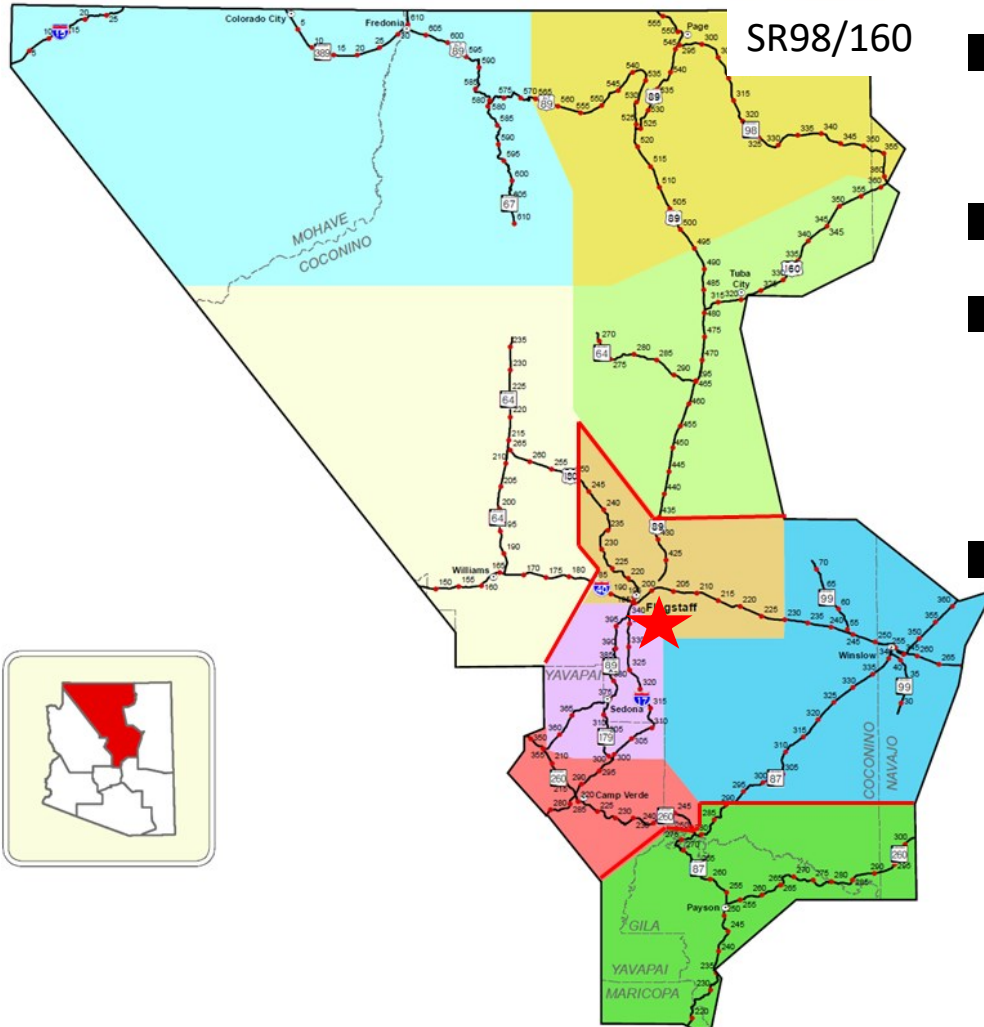


DPTF Area Plan Meeting Northcentral District Update March 12, 2020



NORTHCENTRAL DISTRICT - MAP

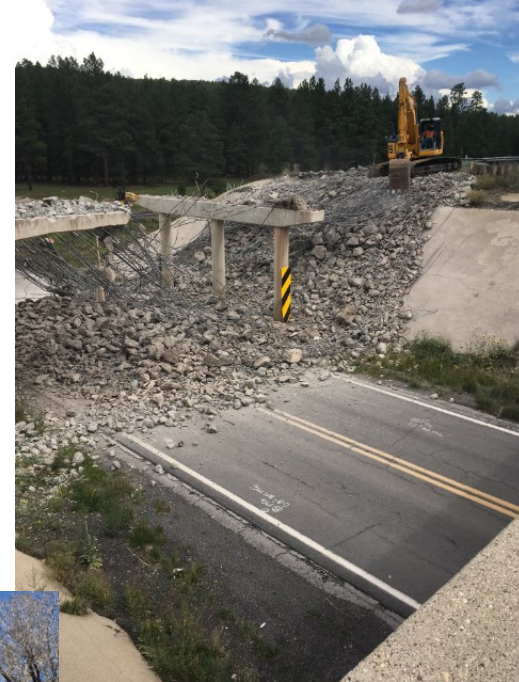
29.4 mi



- District Area ~ 23,200 square miles
- Just under 2,800 lane miles
- Coordinate our construction & maintenance activities with over 40 Stakeholders
- Limits

CURRENT PROJECTS OF INTEREST

- I-17: Cnty Line – I-40 Pavement Preservation (Northbound); 24.5M
- 89A Spur Overpass “McConnell Bridge” Deck Rehab. + SW; 6.3M
- I-40: Butler TI + 4th Street Bridges; 14.4M
- Statewide Wildlife Vehicle Conflict Study



UPCOMING PROJECTS OF INTEREST



FY2020:

- B40: Rio de Flag Bridge Replacement; est.4M

FY2021:

- I-40: I-17 to Walnut Canyon Pavement Preservation; est. 20M
- I-17: I-40 to County Line Pavement Preservation (Southbound); est. 35M

UPCOMING OF INTEREST



Our 5-yr construction program we revisit annually.

Currently working on our:

FY 2021 – 2025
Tentative Five Year Program

Public Hearings:

- March 20 Marana
- April 17 Flagstaff
- May 15 Phoenix

www.azdot.gov

THANK YOU

