



When walking with your pet, take a plastic bag or paper cup along and dispose of the waste properly.

- Flush it down the toilet.
- Put it in the household trash after securely wrapping it (don't use a yard waste container).
- To bury pet waste, dig a hole at least one foot deep and place three to four inches of pet waste at the bottom. Use a shovel to chop and mix the waste into the soil at the bottom, then cover the waste with at least eight inches of soil to keep rodents and pets from digging them up<sup>1</sup>.
- Pet waste is not recommended for back yard compost piles. Parasites in dog and cat feces can cause diseases in humans and should not be incorporated into compost piles<sup>1</sup>.

<sup>1</sup>[http://www.epa.gov/safewater/sourcewater/pubs/fs\\_swpp\\_petwaste.pdf](http://www.epa.gov/safewater/sourcewater/pubs/fs_swpp_petwaste.pdf)



## Did you know?

- 7,500 registered dogs reside in Coconino County
- These dogs create nearly 2 tons of waste per day!<sup>2</sup>
- Pets can catch diseases from coming into contact with infected feces of other pets
- Be aware of the Coconino County Environmental Services Code that governs pet waste cleanup – "Manure shall not be allowed to accumulate in any place where it can prejudicially affect any source of drinking water." A person violating this provision is guilty of a Class 3 misdemeanor

<sup>2</sup><http://www.livescience.com/44732-eliminating-pet-poop-pollution.html>

## Contact Us

Phone: 928-679-8881

Email: [jcarr@coconino.az.gov](mailto:jcarr@coconino.az.gov)



## COMMUNITY DEVELOPMENT

2500 N. Fort Valley Rd., Bldg 1  
Flagstaff, AZ 86001  
928-679-8850



# COCONINO COUNTY ARIZONA

## COMMUNITY DEVELOPMENT

*Managing Pet Waste*

## If not handled properly, pet waste:

1. Infects children and adults with disease-causing bacteria and parasites.

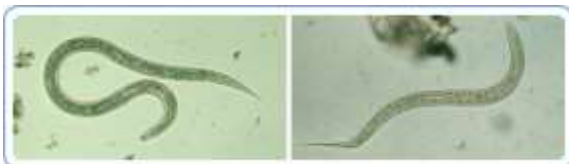
Children, who play in yards or in parks where pets defecate, are susceptible to infection from disease-causing bacteria and parasites found in pet waste.

Diseases that can be passed from pet waste to humans:

**Campylobacteriosis** – a bacterial infection carried by dogs and cats that frequently causes diarrhea in humans.



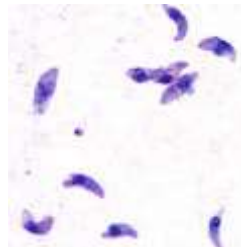
**Hookworms** – Bloodsucking hookworms can cause blood loss leading to anemia, plus protein loss, in dogs and humans. Hookworms use hooks to hold on tight to the intestinal wall!



**Toxocariasis** – roundworms usually transmitted from dogs to humans, often without noticeable symptoms, but may cause vision loss, a rash, fever or cough.



**Toxoplasmosis** – a parasite carried by cats that can cause birth defects if a woman becomes infected during pregnancy. Toxoplasmosis can also be a problem for people with depressed immune systems.



**Other diseases include:** whipworms, salmonellosis and giardia

2. Spreads diseases between pets.



3. Makes our river water unsafe.

Pet waste left on the ground may wash into storm drains and end up in the *Rio de Flag*. Our river water quality suffers. Pet waste, after being washed into the *Rio de Flag*, uses up oxygen when it begins to decay, causing harm to aquatic organisms and degrading river health. It can make our river unsafe.

